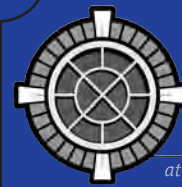


Muse letter



STILLWATER
HISTORY
MUSEUM

at the Sheerar Cultural Center

Annual Report 2022 1st Quarter Winter 2023

Board President

IN THIS ISSUE

Exhibit Schedule	2
Programming	3
Gayle Robinson and the Heritage Garden	4
Museum Stores, PCHS	5
PCHS Merger	5
Planned Giving	5
2022 in Review	6
Helping Hands	7
2022 Associates	8
2023 Associates, Member Renewal	9
Mission	10

MUSEUM HOURS

Tuesday-Saturday
11am-5pm

Museum Closed
Sundays, Mondays,
& Holidays

After hours tours are available
by appointment

DONATIONS APPRECIATED

Call 405-377-0359 or email
info@sheerarmuseum.org
to schedule your event
at the Stillwater History Museum at
the Sheerar today!

LEARN MORE
sheerarmuseum.org

Follow us on **FACEBOOK**
and **INSTAGRAM**

FROM THE PRESIDENT ... BANNER YEAR

2022 has been, to say the least, an eventful year. From staging exhibits to holding events, we are fortunate to have the continued energetic and insightful leadership of Director Amelia Chamberlain as we work at fulfilling our mission of serving the Stillwater community. With an eye toward this goal, board members engaged in a variety of assessments and workshops this year. We completed an assessment, clarified our mission statement, and solidified long-term planning. We are excited to share the results of these efforts in the months ahead, as well as a fresh logo, and yes, even new window banners.

It is my honor to recognize the many years of service that Dr. Bill Bryans dedicated to this and other community organizations; we thank him profusely for his many efforts and wish him all the best in his retirement! We welcome our new board members, and the capable leadership of Candace Robinson in the position of Board President. While this marks the end of my tenure as President of the Board of Trustees for the Stillwater Museum Association, it is only the beginning of many exciting things on the horizon. See you at the museum in 2023!

Dr. Laura Arata

FROM THE DIRECTOR ...

At this time of year as Corporate Sponsorships, donations for special projects, and membership renewals arrive daily, I am overwhelmed by our community's generosity. It truly does take a village!

As the museum approaches its 50th anniversary, Board and staff are making plans for a year-long celebration in 2024. Many of our members have been connected to the "Sheerar" since its beginnings. We plan to gather and record the memories and stories people have about the museum. If you would like to share a memory or help out with planning and implementing the event, please drop by for a chat. I have enjoyed the conversations I have had with our members over the past three—going-on-four—years, and appreciate how those conversations have informed me about Stillwater's history. Your visit to the museum serves a two-fold purpose—you are able to explore the latest exhibits and you can inform us as to what you would like to see or do as a member to continue your support of the Stillwater History Museum at the Sheerar.

Amelia Chamberlain
Executive Director



E X H I B I T S



Spirit of Greenwood:

a History of Prosperity and Perseverance

January 17-May 30

Since 1976, every U.S. president has officially designated the month of February as Black History Month. Following World War I, Tulsa was recognized nationally for its affluent African American community known as the Greenwood District. This thriving business district and surrounding residential area was referred to as “Black Wall Street.” In celebration of Black History month, the Stillwater History Museum will display the first 4 panels of an 8-panel traveling exhibit, on loan from the Tulsa Historical Society. *Note: The second 4 panels focus on the history of the Tulsa Race massacre. These final 4 panels will be on display April 1 through July 31, 2023, in honor of the anniversary of this event (May 31, 1912).*



The 2022 **Washington Raising** exhibit will accompany the Spirit of Greenwood **through March 31** with additional information about recent events that have occurred to preserve the original school.

Those Who Served: Those Who Serve

As part of the museum’s “Those Who Served” exhibit, staff will be adding displays about a variety of community service organizations over the next six months. One of the first of these displays will feature the Stillwater Rotary clubs. The year-long **Stillwater Rotary: 100+ Years of Service will open in late January.**



Rotary Clubs have been active in the Stillwater community for over 100 years and are part of Rotary International’s efforts to provide assistance to those in need with projects locally and around the world. The Stillwater Rotary Club was established in 1921 and is one of the oldest active clubs in the nation. Paul Harris established the first Rotary Club in Chicago on February 23, 1905 and there are currently over 46,000 Rotary Clubs worldwide. The Rotary Motto: Service Above Self.

The Rotary exhibit will provide a brief history of Stillwater Rotary and feature the role of local clubs in activities and service projects here and around the world.

Two local Rotary clubs merged membership and operations as of October 1, 2022. Stillwater Rotary, originally chartered in 1921, and Stillwater Frontier Rotary, chartered in 1974, will henceforth be known as Stillwater Frontier

Rotary and continue the 1921 charter date, making this one of the oldest Rotary clubs in the nation. The newly merged club boasts a membership exceeding 110 Rotarians which will rank in the top three largest Rotary clubs in Oklahoma.

Also opening in late January: displays about Wreaths Across America, Quilts of Valor, and the American Legion.

STILLWATER COLLECTS

Mahjong

January 17-March 31

Mahjong is a tile-based game that was developed in the 19th century in China and has spread throughout the world since the early 20th century. It is commonly played by four players. It is similar to the Western card game rummy, Mahjong is a game of skill, strategy, and luck.

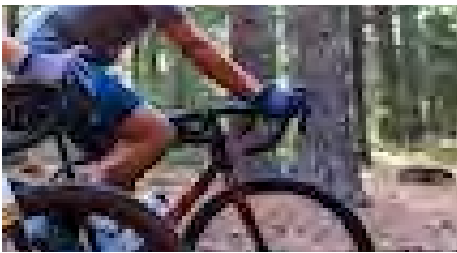
Stillwater resident Patty Armbruster has **many** collections! This quarter we will feature another of those—her Mahjong collection. Patty has numerous Mahjong sets—some new, some vintage. She also has an old set of cards that people used in the past when playing Mahjong. Also featured will be a tablecloth and napkins with Mahjong symbols on them; a ring, earrings, bracelets and necklaces made of Mahjong tiles, and books. Judy Ringwall, another Stillwater resident, will also display a vintage Mahjong set. Come learn to play in March!

P R O G R A M S

Culture in the Auditorium!

The Sheerar Cultural Center building has a history of hosting many different cultural events over the years.

In 2023 the Stillwater History Museum will focus on bringing more culture to our community as we invite children's theater productions, musical concerts and recitals, "artists in residence" (hello to Jesse Tabish and Jessica Borth!), art shows, and more.



On **January 14**, join us for a special screening of the film "**Relentless Ride**," a documentary that dives into the minds and lives of cyclists brave enough to face the Arkansas High Country. With 1,000 miles and 80,000 feet of climbing on some of the best and worst gravel roads Arkansas offers, this self-supported race pushes these men and women to their limits and beyond. Only those able to weather the storm are able to finish this Relentless Ride.

An opening **reception at 6 p.m.** will feature a complimentary pint from Stonecloud Brewing. The **film begins at 7 p.m.** Fee: **\$25 per ticket.** *All proceeds benefit the Stillwater History Museum.* An after party and storytelling at Stonecloud Brewery will follow the showing.



culture cont'd. ...

Sound and Vision at the Sheerar
Saturday, February 11, 7-9 p.m.
Sunday, February 12, 1-3 p.m.

Sound: Jesse Tabish, "Mass Music," unreleased instrumentals
Vision: Aaron Frisby, a selection of mixed-media works and a suite of paintings in homage to Kees Van Dongen's "Spring"

A percentage of the proceeds from the sale of Frisby's art will be donated to the Stillwater History Museum.



Stillwater Community United and member organizations invite area residents to join in commemorating the life and legacy of Dr. Martin Luther King, Jr. during Stillwater's 2023 MLK Day events. On **Monday, January 16, 2023**, join the MLK Day Unity March at **1 p.m.** The march leaves from **Southern Woods Park** and will end at the OSU Spears School of Business with additional activities to follow on campus. Participants are welcome to march the entire route or join anywhere along the path. Additional details and a map of the planned walk are available on the Stillwater Community United Facebook page. Please wear your mask and maintain social distancing.

Mahjong Fun!

February 23 & 25; March 23 & 25
2-5 p.m. each day
Free

Have you ever wanted to learn how to play the game of Mahjong or meet other Mahjong enthusiasts?

In connection with the current Mahjong exhibit, the museum will be hosting four days of learning and playing. On each of these days, the time from 2-3pm will be spent introducing the game—focusing on basic rules and strategies. From 3-5pm, Mahjong groups are invited to bring their sets and play. As we'll have a limited number of spaces, be sure to reserve your spot by emailing:

programs.sheerarmuseum@gmail.com



Spring Break Activity

March 14, 15, 16, 17, & 18, 11am-4pm
Free

Stop by the museum to decorate a garden marker and pick up a seed packet of Monarch butterfly garden flowers to grow this spring.

2nd Annual Family History Fair

Saturday, April 1

1-4 p.m.

free; donations appreciated

Participants will discover the many resources available in our community to help with researching, documenting, and recording their families' military histories.

Pysanky with the Director

Friday OR Saturday, April 7,
1-4 p.m., OR April 8, 9 a.m. - noon
Adults 16+; \$15, \$10 for members

Try your hand at this seasonal Ukrainian egg-dyeing craft full of traditions.

All materials provided. Limited spaces; pre-registration required by emailing: programs.sheerarmuseum@gmail.com

Gifts that Keep on Giving, continued ... from last winter's newsletter

Over the years donors have left gifts of all shapes and sizes to the Stillwater History Museum at the Sheerar. These gifts have made a **HUGE** impact on improvements to infrastructure, exhibits, and programming over nearly 50 years.

Granada Gayle (Nixon) Robinson, 84, passed away peacefully on October 23rd, 2022, in Stillwater, OK, where she lived since attending OSU as a freshman in 1957. She was born November 19, 1937 to Roxie Mae and Clifford Nixon in Muskogee, OK. She followed her junior high classmate, Robert L. Robinson, Jr., who would become her lifelong companion, from Muskogee to Stillwater where they began their married life together in 1958.



The couple moved to Tulsa in 1964 where she completed a B.A. degree at Tulsa University in 1965. That same year, they moved back to Stillwater when Rob joined the Chemical Engineering faculty at OSU. They were blessed with the birth of their daughter, Jennifer, in 1967. Gayle juggled being a loving mother, faculty wife and graduate student during those years. She graduated in 1972 from OSU with an M.S. degree in Interior Design - one of six OSU degrees held by her family.

Always interested in local history, she was one of the founders of the Sheerar Museum of Stillwater History, which will celebrate 50 years of existence in 2024. She served the Museum in many capacities over the years. She was also one of the founders of the Late Bloomers Garden Club, which started the historical garden on the Museum grounds in 1997. Growing up in Muskogee, a garden club city, influenced her love for the beauty found in nature, which she wanted to share with the community.

In lieu of flowers, the family requests donations in her memory to endow a fund for the continuation of the Heritage Garden at the Sheerar Cultural Center, 702 S. Duncan, Stillwater, OK 74074, the QR code to the right or <https://square.link/u/3cB9SpYw>. Her gift comes at an opportune time to ensure the garden continues... as Gayle wished.



Thanks to many generous donations in Gayle's name, the Heritage Garden fund currently totals \$5,030.

Balabhaskar Balasundaram	Rick and Rodette Green	Phyllis Luebke	Pi Beta Phi Fraternity Alumnae
Vera Bilyeu	Carol Headrick	Carolyn Magee	Barbara Spell
Kara Brown	Jessica Henson	Ken and Mary McKinley	Caryl and John Talley
Chad Clay	Judy Hoberock	Kendall Meacham	Amy Tidland
Judy Clay	Johnnie and Linda Hopkins	Cathy Bolton McCullough	Rona Tracy
Stephen and Marilyn Cyrnes	Johna Kaehler	Terry Melendez	Ron and Ruth Walker
Camille DeYong	Kay Keys	Patsy and Wayne Muller	Sandra Webb
Charles and Phyllis Drake	Patty and Tom Keys	Colin O'Day	Ann Whiteley
Malinda and Dick Fischer	Kristen Kulling	Ava Osborn	Peggy Yarborough



Ada Ruth Emmons Sturgeon, 92, passed away peacefully on Friday, July 8, 2022 with her children by her side. Ruth was a Child of The Great Depression born in Western Oklahoma on November 19, 1929. She was the middle child with six siblings raised on a farm near Okeene. Ruth graduated from Okeene High School, attended Central State University in Edmond for two years, and took her first job at the State Guaranty Bank of Okeene. She met Roy V. Sturgeon, Jr. at a high school basketball game and they married on August 27, 1950. The couple farmed the Sturgeon homestead near Lacey with the arrival of daughter Vickie and son Jerry. In 1956, the family moved to Stillwater so R.V. could pursue graduate school at OAMC and a career in Ag Extension. Ruth began working at the First National Bank of Stillwater as a Teller and was promoted to Assistant Cashier before her retirement.

Ruth was a long-time friend and donor of the Stillwater History Museum. The family requested that memorials be made as a donation to the Stillwater Medical Foundation, the First Christian Church of Stillwater, or the Stillwater History Museum at the Sheerar. Thank you to Pat Jaynes and Sue Moore for their contributions in Ruth's name.

The museum shop at the Stillwater History Museum has uncommon gifts sure to please the recipient—and its a great way to support YOUR museum!

A recent posting on an American Alliance of Museum blog by veteran museum store retailer, Stuart Hata, included information about the role of museum gift shops in their communities.

Museum Store FAQs

- The products sold in museum stores reflect its mission, collections, and programs.
- Museum stores earn income, extend mission-related programs, engage visitors, and provide educational outreach through store products and experiences.
- Revenues generated by museum

stores provide economic sustainability for the museum and cultural engagement for the community.

- Museum stores further their museum’s educational mission by offering products that allow the public to “take home” a part of the museum for their enjoyment and ongoing memory of their museum experience.
- Museums audiences range from schoolchildren to professionals, from college students to retirees, and from families to single adults. Museum stores effectively serve these diverse visitors by offering a wide variety of items and price points that help capture the interest of each of these various patrons.
- A museum store creates long-term patrons of the museum by engaging children, teens, and young adults. This is an important demographic

that can be reached through the museum store and helps to create future audiences that can support and sustain the museum.

- Products found in museum stores are as intentionally selected as the objects displayed in their respective institutions.
- Museum stores are vital frontline ambassadors for their institutions—ensuring visitors receive welcoming and enhanced experiences.
- Museums foster ongoing appreciation and knowledge of art, nature, culture, science, and history. When consumers purchase a gift from a museum store, they help to sustain the institution’s service to the public.
- Museum stores help their institutions create a sense of pride and ownership in their members, visitors, local governments, communities, and the public.

PCHS MERGER

The Board of Trustees of the Payne County Historical Society, with the support of its full membership, voted on December 1, 2022, to merge with the Stillwater History Museum, effective January 1, 2023, and in accordance with PCHS By-Laws.

Background

For several years, the PCHS Board has dealt with operational challenges and has discussed a potential merger with the Stillwater History Museum at the Sheerar (SHM). PCHS membership numbers have been decreasing, and since the vast majority are lifetime members, there is insufficient annual income to support the continued publication of the *PCHS Review*. Merging with SHM, an organization with similar purposes and objectives, was considered to be the best way to ensure continuation of PCHS’s mission and objectives, including publication of *The Review* for at least a few more years (and we hope, longer). The SHM Board voted October 19, 2022, to approve this merger, the details of which are outlined below.

• PCHS will merge with the Stillwater History Museum at the Sheerar with an effective date of January 1, 2023.

• A permanent standing committee will be formed at the SHM, called the Payne County History Committee, which will continue to oversee publication of *The Review* along with organizing activities aligned with the PCHS’ former county-wide mission. The present PCHS Board will constitute this new committee with the current President becoming the committee chair and serving as a voting member of the SHM Board.

• The PCHS website will migrate to the SHM website—the PCHS link will be found in the site navigation. On the PCHS pages, members will be able to view a complete listing of past Reviews and their titles as well as PDF files of past Reviews as they are digitized. At this time, those files number 19 volumes from the early 1980s.

The SHM quarterly *Museletter* will include a section with PCHS news and updates beginning with this issue.

PLANNED GIVING

In a previous newsletter, the many legacy gifts the Stillwater History Museum at the Sheerar has received were highlighted. Imagine the difference you could make to the Stillwater History Museum by creating a plan that directs the executor of your estate (or manager of your funds) to transfer assets to the museum on your behalf. **To create a bequest**, contact your attorney to establish a provision for the Stillwater History Museum in your will or living trust. You may choose to direct your support to a specific project, make the museum a beneficiary of a percentage of the remainder of your estate after debts and taxes are paid, or you may designate a specific amount or particular asset such as U.S. savings bonds, securities, real estate, art, or other tangible personal property. **To make a gift of a Life Insurance policy**, make the museum the owner or name the museum as a beneficiary. **Thank you for your support!**



2 0 2 2 I N R E V I E W



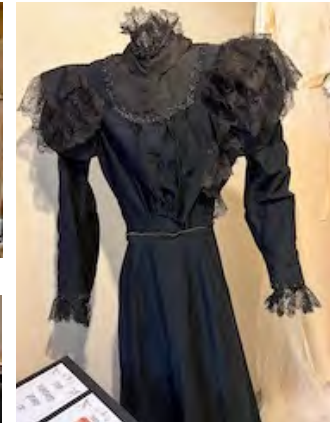
INAUGURAL FAMILY HISTORY FAIR



**HELT STUDIO
WEDDING NEGATIVE PROJECT**



RENA PENN BRITTAN HAT EXHIBIT



JARDOT WEDDING DRESS



669 BLUEPRINTS SCANNED



WASHINGTON SCHOOL MEETING



EDGAR CRUZ CONCERT



**OSU HISTORY CLUB
NIGHT AT THE MUSEUM**

Other 2022 highlights included work with the Stillwater High School

Alumni Association Museum collection, revision of the museum's mission and logo, participation in two assessments to guide the museum's future direction (Museum Assessment Program (MAP1) and more recently, a Building Assessment). Both assessments noted that the museum is approaching its limits in collection storage and the need for additional staff to carry out its work. And, check out the new website in progress at stillwaterOKhistory.org!

2022 FINANCIAL OVERVIEW

Income

Contributions	\$ 50,653
Earned Income	\$ 16,747
Grants and Contracts	\$ <u>46,166</u>
	\$ 113,566

End of Year Investment Balance \$262,831

Expense

Administration	\$57,762
Building Maintenance and Utilities	\$32,738
Collections, Programs, & Exhibits	\$ 6,032
Grant-funded (reimbursements yet to come in)	\$ <u>22,523</u>
	\$119,055

2022 ARTIFACT DONATIONS

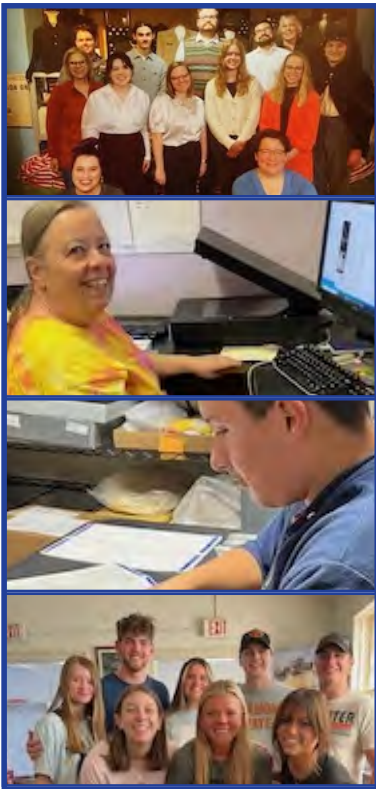
- Framed photograph of Diamond Pharmacy
- Framed photograph of Nathan "Bud" Payne
- Payne County Flag
- 8th Grade Stillwater cheerleading uniform
- Stillwater Masonic items
- Photograph of 1948 Stillwater Rotary Club
- Zannotti's Bar wine cabinet
- Crystal Plunge 1962 Season Ticket
- US Navy summer uniform 1970s
- 1990 Kameoka plaque to Marilyn Choike
- DECA memorabilia
- 1961 member card James E. Berry SW Masons
- Aggies beat OU fabric sign
- List of Oklahoma governors and symbols
- Ward family and SW photographs
- 1960s First National Bank cloth bank bags
- Pair of yarn dolls made by Molly Sheerar
- 1950 Photograph of Eugene Field School
- 2 "Pine" mason jars
- 1960s Steamset steam curler set
- 1935 Booklet from Governor William H. Murray
- Two military uniforms Judge Worthington
- Framed photograph of General MacArthur
- 3 wedding dresses, 1 pattern, and photographs
- Roy T. Hoke Lumber carpenter's apron
- drawing compass

The Museum's MANY Helping Hands

<p>PLATINUM \$1,000+</p>    	<p>2023 CORPORATE SPONSORS</p>          <p>GOLD \$500</p>
<p>SILVER \$250</p>  	

- VOLUNTEERS**
 Taylor Bailey
 Jeremy Berry
 Terry Berry
 Nico Carey
 Wanda Cook
 Karolana Foister
 Juthi Ghosh
 Kai Krishnan
 Anna Leport
- 2022 BOARD**
 Laura Arata
 Judi Baker
 Bill Bryans
 Denise Ferrell
 Stephen Gose
 Darian Johnson
 Susan Matlock
 Sarah Mutschknaus
 Nani Pybus
 Candace Robinson
 Matt Schauer
 Annette Shamus
 Mike Staubus
 Bridget Cuadra
- STAFF**
 Amelia Chamberlain
 Alex Milton
 Kitty Pittman
 Debbie Williams
- WORK-STUDY**
 Taryn Davis Booker
 Chauntal Dudley
 Jaidan Dudley
 Paytyn Packham

GRANT FUNDING
 American Relief Plan Act
 OHRAB Building Assessment & Improving Access to Collections
 OHS Historic Preservation
 Oklahoma Arts Council
 Small Project: Vibrant Impact



2022-23 Community Partners
 City of Stillwater & Frontier Masonic Lodge #48

2022 LATE BLOOMERS GARDEN CLUB
 Ann Berry, Katie Fellows, Kay Keys, Kay Lewter, Caroline Linehan, Patricia Majid, Terry Melendez, Gayle Robinson, Mary Kaye Rogers, Sue Wright

THANK YOU ROOF REPAIR DONORS!

Champion \$250+
 Sally Banks
 Nancy and Jim Beckstrom
 Catherine Bird Charitable Giving
 Jennifer and Allen Glenn
 Ava and Lynn Osborn
 Annawyn Shamas
 Richard Veril Shawley
 Tiger Drug

Advocate \$150-\$249
 Ann and Jim Halligan
 Ellen and Dale Ingram

Supporter \$50-\$149
 Marilyn Heath
 Amy Loch
 Jan and Eddie Polk
 Kay Stewart
 Dannah Wheelan

Friend \$20-\$49
 Bob Chapman
 Rebecca te Velde

Our Goal

JOIN US IN REACHING OUR GOAL OF \$15,000. TOGETHER WE CAN SUPPORT THE UPKEEP OF OUR HISTORIC BUILDING!

**Donations given by Associates are the FOUNDATION
of the museum's operations budget each year.**

Thank you to all 2022 Associates and PCHS Life & Annual Members

STAKEHOLDER (\$5,000-\$10,000) Debbie and Robert Breedlove	Jennifer and Allen Glenn Roger Gose Mahlon and Gene Halleck Ann and Jim Halligan Joan Hert Lynda Hillier Judy and Larry Hoberock Chris and Gerald Horn Billy McCollom and Ann Houston	Carol and Charles Headrick Deanna and John Homer Judy and Don Hutchison Kayo and Larry Jones Elfriede Miller Sue Bonner and John Mills Judy Nelson Jackie and Jim Plaxico Faye Ann and Glade Presnal Nani Pybus Judy Ringwall Mary Kaye Rogers Kay Stewart Toni and Bill Stone Judie and Bill Varnum Gayle and Pat Ward Lou and Wes Watkins Judy White Sharon and Gary Wright	Loretta and Dennis Bertholf Ellyn Brashear Rena Carrier Dale Chlouber Dewey Clapp Steve Cundiff Jennifer S. Damders Art Daugherty Marti Dermer Doug Dollar Alex Evers Malinda and Dick Fischer Mette Flynt John Charles Gage John J. Gardiner Kenneth Greiner Patti D. Harris Violet June Harris James Horn Jana Howell Deborah Hull Judy Hull Stan & Sandra Kays Daniel & Lori Kimball David Lambert Amy Loch Velda and Michael Lorenz Elizabeth Ann Matoy Maverick Gas Glynn & Sandy McCauley Roger Moore Greg Olds David Peters Vicki Phillips Kitty Pittman Carol Ann Powell Nani Pybus Danielle Ramirez Shelly L. Ricker Libby Roark W. David Sasser Rusty & Peggy Shaw James Showalter Mike & Karen Slagle Cat and Bill Thompson Michael McDermott & Stan Tucker (Mary) Adran Wagner Gayle and Pat Ward Bonita Warren Lou and Wes Watkins Barbara Wells Harland Wells Dannah Whelan Libby Whitlow Madison Williams
UNDERWRITER (\$2,500-\$4,999) Ruth Sturgeon	Ellen and Dale Ingram Sandra and Tim Ireland Becky and Steve James Darian and Daran Johnson Velda and Michael Lorenz Phyllis Luebke Carol and Robert Maciula Susan Matlock Karen Gallagher and Bob McCracken Martha and Roger McMillian Lynne Miller Charles Moore Sue Moore Patricia and Roger Mullins Sarah Mutschelknaus David Peters Carolyn Meyer and Kel Pickens Jan and Eddie Polk Carol Ann Powell Rob Robinson Matthew Schauer Leanita Shelby Surekha Sheorey Tim Smalley Kay and Ray Smith Carol Solick Vickie Sturgeon Cat and Bill Thompson Grace and Bob Wettemann Dolores and Keith Willett Mike and Mary Woods	SUPPORTER (\$30-\$59) Breanna and Aaron Carlson Bob Chapman Elizabeth and Dennis Cyr Janet and Martin Hagan James Horn Patricia Jaynes Evelyn Quillen and Phil Kenkel Kay Keys Bruce Luttrell Devra McCool Doug Starchman Peak Pest Services, LLC Bonnie Petty Betty and Al Rutledge Cynthia and Dick Shawley Connie Stauter Joyce and Frank Steindl Jodelle and Jack Stout Rebecca te Velde Tabitha Doescher and Joshua Wiener	
PATRON (\$1,000-\$2,499) Gladeen Allred Patty and Steve Armbruster Kathy and Pat Dorr Nelda and Kenneth Helt Ava and Lynn Osborn Annette and Jimmy Shamas, Shamas Family Foundation Pat Winborn			
BENEFACTOR (\$500-\$999) Ann and Jim Berry Amelia and Lee Chamberlain Rodette and Rick Green Marilyn Heath Judy Hull Caroline and John Linehan Elizabeth Anne Matoy John Pollock Annawyn Shamas			
DONOR (\$120-\$499) Laura Arata Judi Baker Sally Banks Nancy and Jim Beckstrom Linda Bentley Bill Bernhardt Fern Bowling Mary and Bill Bryans Cindy and Stephen Carr Jane and Gary Clark Karen and Scott Dean Ann Simma and Dick Decker Jonathan Drummond Jane and Sam Earnest Ann Enix Denise and Danny Ferrell Malinda and Dick Fischer Donna and Dale Folger Edward Noltensmeyer & Carolyn Gang			
	SUSTAINER (\$60-\$119) Linda and Calvin Anthony Barbara and Larry Bellatti Loretta and Dennis Bertholf Nan and Baker Bokorney Steven Cundiff Nancy and Dale Durham Linda and Ray Ely Katie and Robert Fellows Gerald Frank Nancy and Gary N. Franklin Nancy and Richard Giles Mariuse Green Frances K. Griffin	INDIVIDUAL (25) John Bush Kay Lewter	
		STUDENT (\$25) Bridget Cuadra	
		PCHS LIFE & ANNUAL MEMBERS Kurt Anderson Marcia and William Annan Karl Baumgartner Bill Bernhardt Tom Berry	

THANK YOU!

to the following Associates who have **already** made their annual donation for 2023*
(as of the printing of this edition of *Stillwater Muse*). **Your SUPPORT is crucial!**

* Associate membership is for the calendar year. Renewals made in October or later were considered to be for 2023

STAKEHOLDER (\$5,000-\$10,000)

Debbie and Robert Breedlove

BENEFACTOR (\$500-\$999)

Rodette and Rick Green
Nelda and Kenneth Helt
Elizabeth Anne Matoy
John Pollock

Donor cont'd.

Billy McCollom and Ann Houston
Bill Bernhardt
Cat and Bill Thompson
Matthew Schauer
Kayo and Larry Jones

UNDERWRITER (\$2,500-\$4,999)

in memory of Ruth Sturgeon

DONOR (\$100-\$499)

Ann Simma and Dick Decker
Kay Keys
Kay and Ray Smith

SUSTAINER (\$60-\$119)

Nancy and Gary N. Franklin
Faye Ann and Glade Presnal

PATRON (\$1,000-\$2,499)

Patty & Steve Armbruster
Roger Gose
Pat Winborn

If you were not able to support in 2022, please consider becoming a 2023 Stillwater Museum Associate.

For Associates at the **Donor level and higher**, we issue a membership card with a gold NARM sticker so members may take advantage of a special benefit—
FREE ADMISSION to participating museums across North America!

NEW! Beginning in 2023 Donor Level and Higher members will also receive a copy of the **PCHS REVIEW**



Visit narmassociation.org/
for additional information about this program

PLEASE JOIN US! WE TRULY APPRECIATE YOUR SUPPORT!

Your donations allow the Stillwater History Museum at the Sheerar to remain open, free to the public, and to offer quality educational and cultural programs to the Stillwater Community.

NEW! Donor level and higher are now able to request an automatic monthly debit!

Call Amelia at 405-377-0359 to set up your monthly contribution.

Stillwater History Museum 2023 Associate Membership Renewal
We appreciate your support and hope you will consider increasing your level of giving this year.

Name _____

Address _____

City _____

Email _____

Phone _____

Stakeholder (\$5,000 - \$10,000)	_____	Donor (\$120-\$499)	_____
Underwriter (\$2,500-\$4,999)	_____	Sustainer (\$60-\$119)	_____
Patron (\$1,000-\$2,499)	_____	Supporter (\$30-\$59)	_____
Benefactor (\$500-\$999)	_____	Student (\$25)	_____

NEW! Call to set up an **automatic monthly payment** (Donor level or higher)
or make checks payable to: **Stillwater Museum Association**

Call (405) 377-0359 or stop by to make a donation via credit card. **Thank you!**

STILLWATER MUSEUM ASSOCIATION



702 S. Duncan Street
Stillwater, OK 74074
405-377-0359
info@sheerarmuseum.org
sheerarmuseum.org

You are important to us. Please let us know if we have inadvertently left your name off of one of the lists in this newsletter!

The **MISSION** of the **Stillwater History Museum at the Sheerar** is to illuminate, preserve, and celebrate the diverse collective history of greater Stillwater.